

MOD:FMD-609T

Titanmac Series

FULLPOWER Titanmac Series The Ultimate in 4-Side Moulding

Designed and engineered to greatly upgrade moulding performance and operational convenience.

BOOSTING EFFICIENCY IN 4-SIDE MOULDING

With feed speed up to 80 m/min, the **FULLPOWER** Titanmac series 4-side moulder provides you significant and measurable productivity gains-no matter how complex your cut.



The new Titanmac series 4-side moulder offers you faster, more profitable production on complicated profile. The series of moulder features high feed speed of up to 80 m/min. Upon request, an extra high feed speed of up to 185 m/min is available. Each spindle is driven individually by a powerful motor, making the machine ideal for heavy cutting. The entire machine is ruggedly constructed throughout to exhibit the highest stability in high speed machining. The machine is equipped with a high performance PLC controller for user-friendly operation.

WHAT YOU CAN EXPECT FROM FULLPOWER MOULDERS

1. High productivity and high product quality.
2. Quick and accurate setup.
3. Minimum trouble; maximum dependability.
4. Comprehensive technical service.

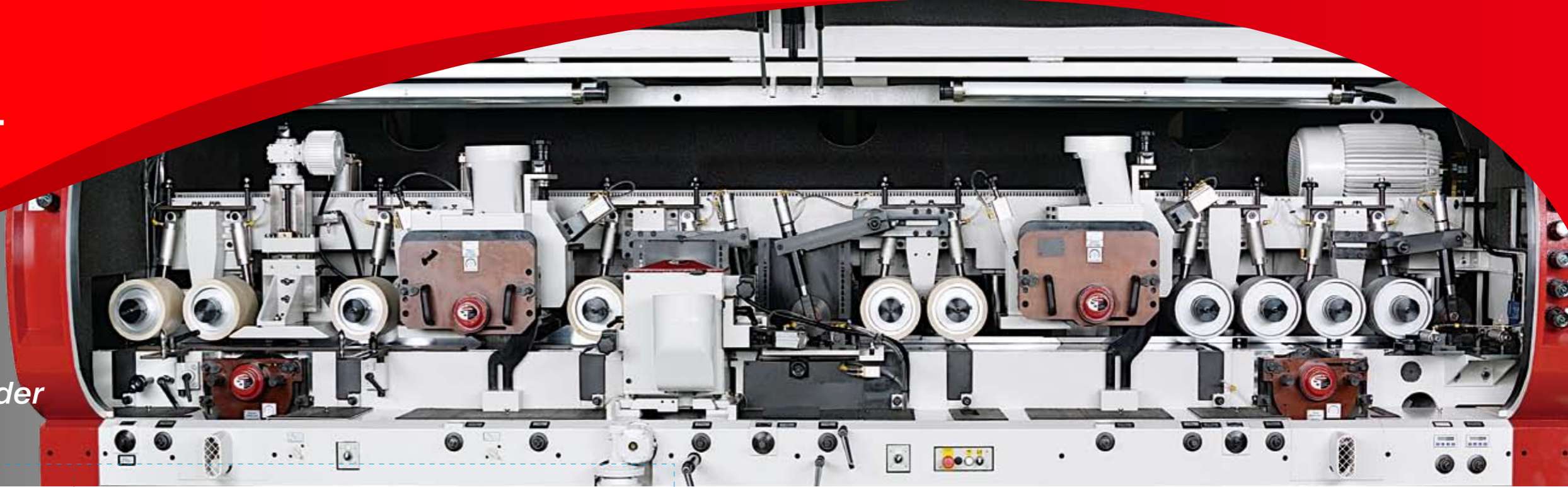
OUTSTANDING FEATURES:

- CE models are available upon request.
- 80 m/min high feed speed is standard. 185 m/min extra high feed speed is available (optional).
- Programmable controller provides added convenience in thickness and width setting.
- Each spindle is conveniently adjusted from the front of the machine.
- Exclusively designed separate adjustment of the vertical spindles and the support tables enables the tables to be positioned extremely close to the cutterheads for increased stability during cutting.
- The full safety enclosure is manufactured from heavy gauge sheet metal, providing chip guard and dramatically reducing noise. Strobe-free working light is also equipped.
- Each spindle is driven by an individual motor, allowing for extra powerful moulding operation and easier control.
- Multiple pneumatically loaded feed rollers can be easily set to provide the best feeding effect.
- Table surfaces, guides, chip breaker shoes and pressure plates are hard-chrome plated, featuring maximum wear resistance.
- All manually adjusted parts and turning parts are housed in dry grease lubricated bearings without need of further lubrication.
- An automatic lubricator delivers oil to the feed tables.
- One-piece, heavy duty machine frame is specially heat treated to achieve maximum rigidity and stability.
- The powered top and bottom outfeed rollers upgrade stability and smoothness of wood outfeed even for thin wood or smooth surface of wood.
- The rollers maintain accurate parallelism even after long time operation.
- Mechanical meters are provided for all head axes, pressure parts, chip breaker shoes and pressure plates of the top spindles.
- Sectional chip breaker assembly is mounted in front of top spindle.
- Powered vertical adjustment of the top spindle includes PC networks and digital readouts.
- The spindles and housings are manufactured from high quality alloy steel combined with 2 sets of ultra precision duplex bearings in each spindle. The spindles are permanently grease lubricated.
- All horizontal spindles are fitted with Quick Lock Hydro-loc outboard bearings and cutterhead supports.
- Built in straight and profile jointers provide accurate operation with extra fine finish.

MOD:FMD-609T

Titanmac Series

The High Speed Moulder Helps You Stay Ahead



High Speed Production

The FULLPOWER Titanmac series is designed especially ideal for high production demands, that helps customer to dramatically increase throughput and create profits.

Suitable For Large And Small Lot Production

The FULLPOWER Titanmac series will fully exhibit its high-capacity and high quality moulding operations. It's a value-added machine that is ideal for both large and small batch production runs.

High Precision Spindle

Each spindle is carefully assembled and runs in high quality bearings, making the machine suitable for heavy cutting and long time continuous running. The heavy duty spindles are dynamically balanced for extra smooth running.

Extra Fine Finish Effect

The Titanmac series moulder creates extra fine surface quality of workpiece, which requires no further sanding on planed and profiled surfaces.

With Titanmac Series Moulder, Experience New Levels of Cutting Speed And Surface Finish.



Powerful Gearbox & Motor Drive

- The feed rollers are driven by gearboxes and transmitted through universal shafts to achieve full power transmission. This results in smooth feeding effect at all times.
- Heavy duty gears in the gearboxes feature no backlash and provide powerful and accurate feeding performance.



Pneumatically Operated Lubricator

The pneumatically operated lubricator provides superior lubrication effect.



Infeed Safety

The infeed rollers running is controlled by a limit switch (anti double-up gate). In case wood thickness is excessive or there is double up, the wood feed stops automatically for safety.

Various Spindle Deployments

FULLPOWER Titanmac series 4-side moulder provides 5-10 spindles to select with various spindle deployments as desired. Standard spindle deployments are shown as below for reference.

FMD-609T

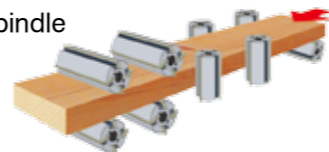
5-Spindle



7-Spindle



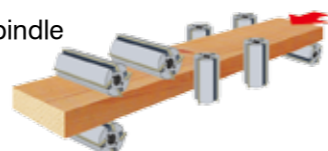
9-Spindle



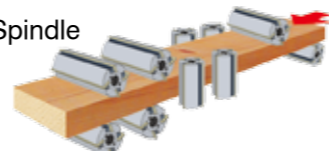
6-Spindle



8-Spindle

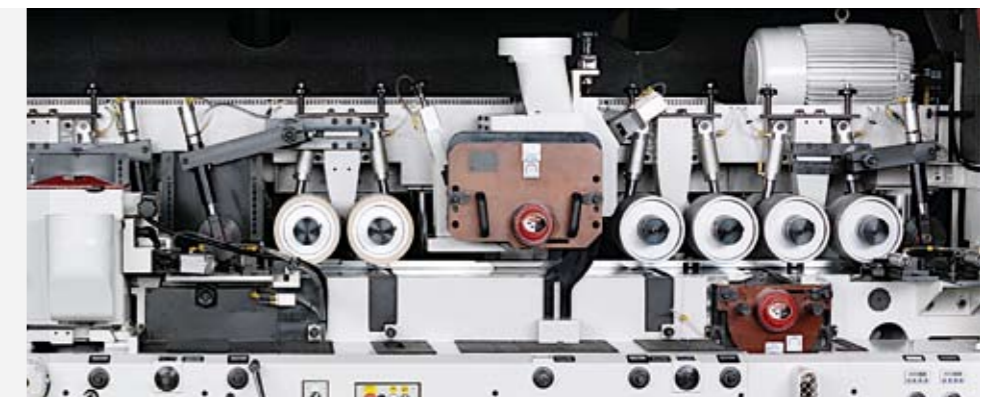


10-Spindle



Convenient Spindle Adjustment

All spindles are conveniently adjusted from the front of the machine. All adjustment points are designed with the same height for convenient and quick adjustment.



MOD:FMD-609T

Titanmac Series



Outstanding Pressure Mechanism Design

Newly Developed Pressure Mechanism That Improves Cutting Stability.

PNEUMATICALLY LOADED SIDE AND PRESSURE SHOES

- The special design of pneumatically loaded side and pressure shoes for the left spindle provides extremely stable pressure for high speed cutting operations.
- Pneumatically loaded top pressure roller system in front of the right vertical spindle makes wood feed smooth.

AIT-5000/6 Automatic Infeed Table (optional)



The automatic infeeding system is designed to dramatically increase productivity with less effort. With the automatic infeeding system, wood is continuously fed at a fast pace.

Outstanding features included are: powered top and bottom feed wheels, variable infeed speed, air cylinders loaded feed wheels and more.



Self-activated Clutch For First Top Feed Roller

The first feed roller is powered and equipped with a clutch, and rotates freely even with high speed infeed. This feature may avoid damage to the workpiece and machine, while ensuring smooth operation at high feed speed.



Double digital readouts for axis with setworks. Other axes have optional digital readouts & setworks.



Infeed Table & Fence Adjustment

The infeed table and fence are adjusted conveniently from the front with LED digital readouts.

Control System

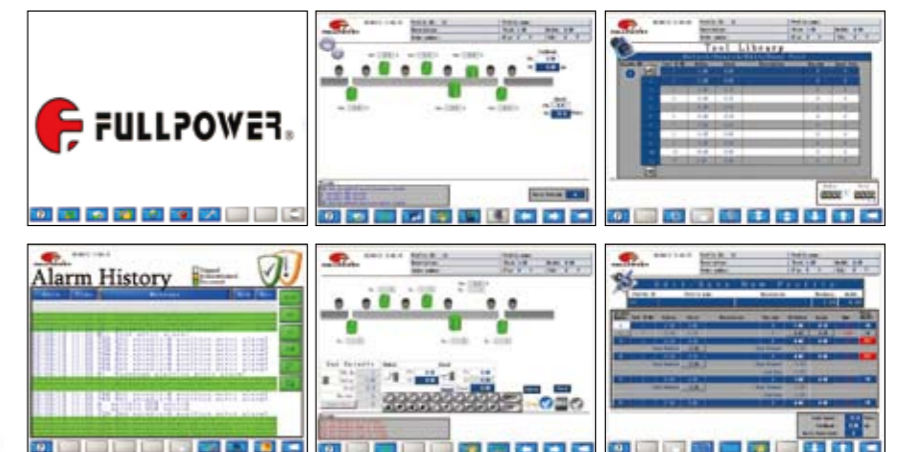


Programmable Controller Easy to Set Width & Thickness

- By using the programmable controller, the width and thickness is easy to set.
- The desired values of width and thickness can be preset and are displayed on an LED digital readout.
- The feed speed is controlled by a VFD inverter with LED digital readout.

Smart Control With Touch Screen (optional)

- Quick setup
- Powerful function. Easy to learn and operate.
- History and library of information.
- Pattern/profile memory capacity is 500 or 100 patterns.
- Setworks on any axis as desired.
- All axes are fitted with ball screws and rotary encoder position feedback to provide optimal set control, resulting in better cutting quality.
- Download from the measuring stand in grinding room to PC to upload to the smart control is available.



Specifications:

Standard Equipment	FMD-609T	Available options
Number of spindles, min-max	2 to 11	
Working width (with a head cutting circle of 160-260 mm)	20-230 (0.78"-9.1")	260 mm (10.2") or 300 mm (12")
Working thickness (with a head cutting circle of 160-260 mm)	10-150 mm (0.39"-6")	to 200 (8")
Basic spindle motor capacity (wye delta soft starts on all motors)	15 & 22.5 kW / 20 & 30 HP	to 45 kW (60 HP)
Spindle speed	6,000 RPM	7,200 RPM or 8,000 RPM
Spindle diameter	50 mm or 1-13/16" or 2-1/8"	
Tool cutting circle, 1st bottom spindle, min-max	160-260 mm (6.3"-10.25")	
Tool cutting circle, vertical spindles, min-max	160-260 mm (6.3"-10.25")	
Tool cutting circle, horizontal spindles, top, min-max	160-260 mm (6.3"-10.25")	
Tool cutting circle, horizontal spindles, bottom, min-max	160-260 mm (6.3"-10.25")	
Feed motor-standard	15 kW / 20HP	to 30 kW (40 HP)
Feed speed, infinitely variable by VFD inverter duty motor	8-80 m/min (25-265 FPM)	120 m/min (400 FPM), 160 m/min (533 FPM)
Top feed roller diameter	205.36 mm (8")	
Top feed roller width	3 x 50 mm (2")	
Pneumatic pressure for feed rollers, max	6 bar (85 psi)	
Adjustment range for infeed table and edge-jointing fence	10 mm (0.4")	
Adjustment range for vertical spindles (axial)	80 mm (3.2")	
Adjustment range for horizontal spindles (axial)	40 mm (1.6")	
Length of infeed straightening table	0.8 M (32")	
Clutch roll on 1st top infeed roll	Included	
Digital readout and quick set to main guide & infeed rolls (btm head cut-table)	Included	
Quick set setworks on near side head(s) & top head(s)(radial set)	Included	
Mechanical digital readouts for the spindles, top head chip breakers	Included	Extra insulation with steel punched sheet steel interior
Full sound and safety enclosure w/ strobe-free lighting	Included	
Motorized vertical adjustment of feed beam with top feed rolls	Included	
Pneumatic lateral pressure roller systems on infeed & opposite first right spindle	Included	
Extra HD chainless cardan shaft feed system w/ExHD gearboxes	Included	optional on all axis and smartset controls as noted below optional
Diameter of dust hood for vertical spindles	ø200 mm (7.9")	
Diameter of dust hood for horizontal spindles	ø230 mm (9.1")	

Optional Equipment	
Straight &/ or profile jointers any heads	Rip saw section with up to 56 kW (75HP)
Remote jointer control	Additional quick set setworks on any desired cutterhead axis
Tilting side heads-to 45 degrees	Universal spindle, tool cutting circle min 160 mm, max 200 mm
Split top head pressure shoes	Electronic rotary encoder digital readouts in lieu of mechanical counters-not required with smartset
Directly opposed side heads	Controls as included
Left (opposite) head feed	Smart set touch screen controls with 500 or 1,000 pattern memory and download capabilities from the grinding rooms with upload to the control including ball screws, rotary encoders & multiple digital readouts on each axis
DC electronic cutterhead brakes	
Cutterhead lift off crane	Tilting top beam, tilting feed, tilting feedworks

• Specifications and design characteristics are subject to change without prior notice.



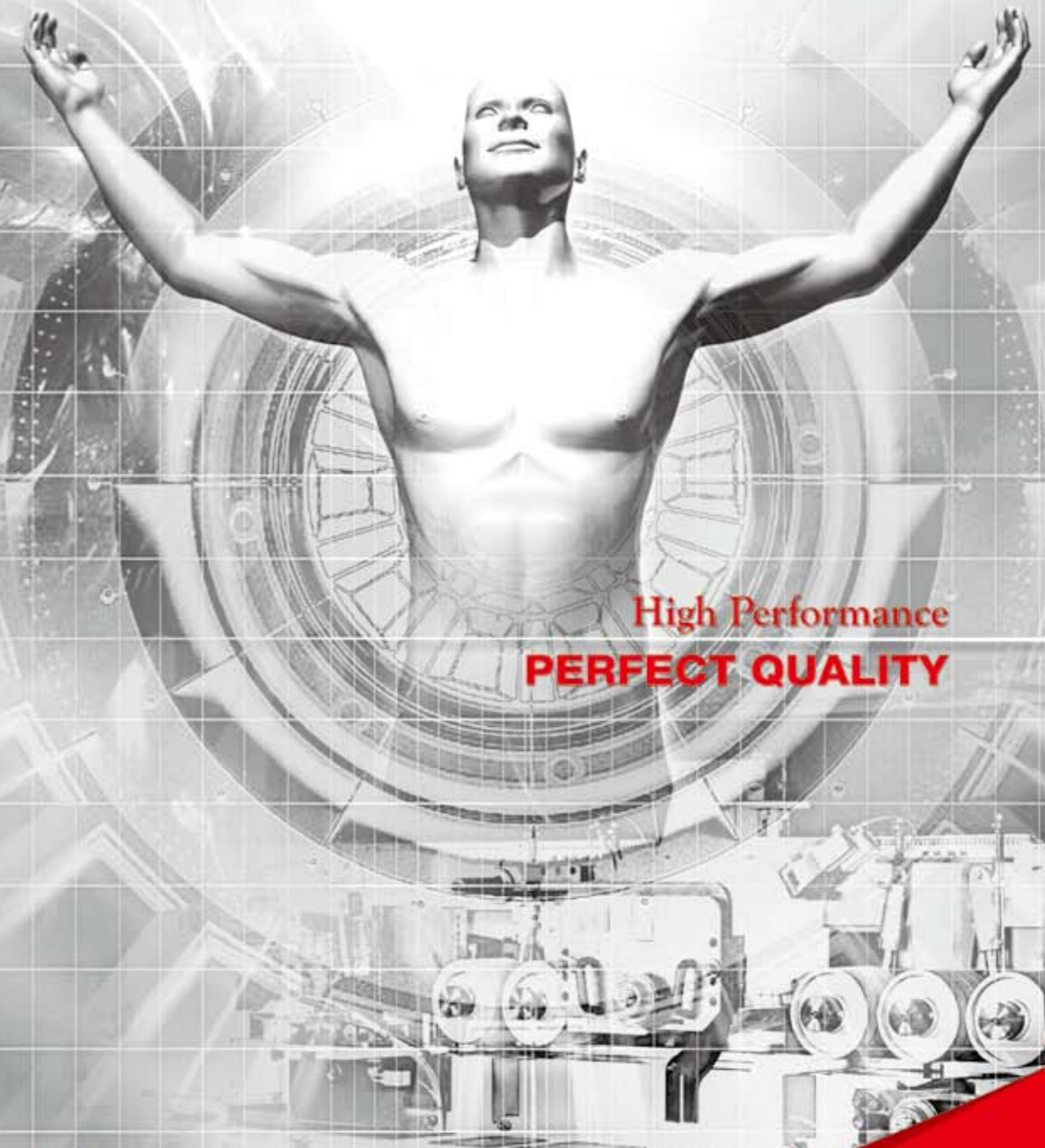
**FULPOW INDUSTRIAL CORP.
FULLPOWER MACHINERY CO., LTD
LEADPOWER INTERNATIONAL CORP.**

ADD : 7F-2, NO. 400, SEC. 1, CHANG PING ROAD, TAICHUNG, TAIWAN (40652)
TEL : 886-4-2243 9235 (REP) FAX: 886-4-2244 3829
MAIL : fulpow@ms7.hinet.net

07.2012 / 2000 03-066EUS Sunway 04-2322 7607

4-Side Moulder
Designed With Your Needs in Mind.

FULLPOWER TitanmaC Series



High Performance
PERFECT QUALITY



FULPOW INDUSTRIAL CORP.